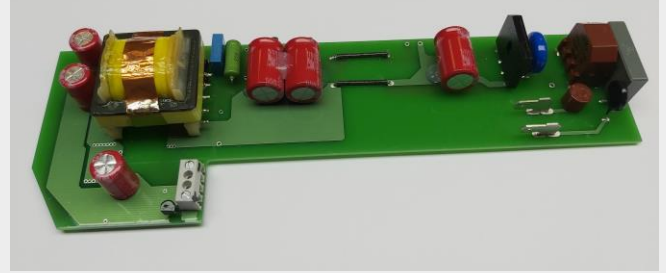


## ACDC-power supply 60W



### Technical Data

<b>Input</b>	
Input voltage	230 Vac $\pm$ 5%
Input current	0,3 Aac
efficiency	92,5%
Inrush current	<30A cold
<b>Output</b>	
Output voltage	24Vdc
Output current	2,5Adc (<8Adc)
Output power	60W
Initial tolerance U, I	0,5%
Voltage accuracy	0,5%
Dynamic load regulation	0,36V ca. 1,5%
Transient time	Max. 1ms up to initial tolerance
Ripple and noise	<0,5%
Static line regulation	0,5%
Static load regulation	0,5%
<b>Safety</b>	
Protection class	II
Protection category	IPO0
Isolating voltage (I/O)	3750Vac
Input filter	According EN50022B
Short circuit protection	continuous
<b>General specification</b>	
Operating temperature range	0-50°C
Storage temperature range	-20°C-+50°C (10-95% RH)
dimensions	210mmx70mm
cooling	convection

**DEFtron electronic GmbH**  
**Philipp-Reis-Strasse 5**  
**D-35321 Laubach, Germany**  
**Tel.: +49 6405 50580-0**  
**Fax.: +49 6405 3763**  
**info@deftron.de**  
**www.deftron.de**